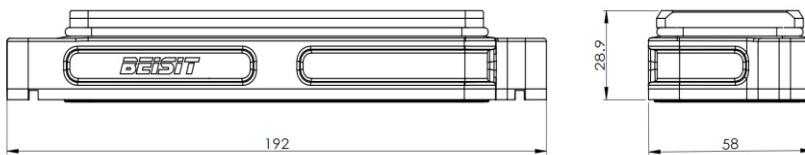


## Size 24B HPR, Bulkhead mounted housing



**Typecode** HPR24B-OM-2B  
**ID** 1 007 11 0000120

### Technical Data

#### Product Properties

Series	Size 24B
Mating with	HE-024, HEE-046, HDD-064, HDD-108, HK-004/8
Housing type	Bulkhead mounted housing
Cable outlets direction	Bottom opening ends
Locking type	Screw
Installation mode	Surface fixed installation
Protection Class	IP68
Impact strength	IK08
Temperature range	-40 °C ... 125 °C
Standard	DIN EN 175301-801

#### Insert

Housing material	Die-casting aluminum alloy
Color	Black (RAL 9005)

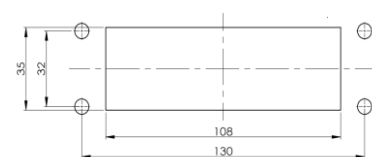
#### Commercial data

Weight	220 g
Packaging unit	1 pc
Country of origin	CN

### Features

- Die-casting aluminum alloy
- Bottom opening ends
- Surface fixed installation
- Resistant to salt spray
- Approval: UL94-V0
- RoHS-compliant

### Installation Size



\*The design data are listed here, and the changes to the product are not described here. For unfinished matters, please contact customer service. It is the user's responsibility to verify functionality, compliance with applicable laws and instructions, and electrical safety in specific applications.