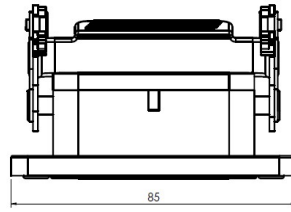
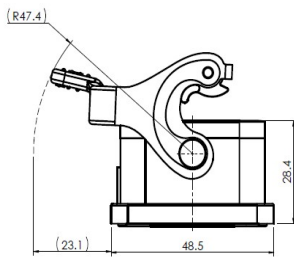


## Size 6B Panel mounting base, stainless steel cover with single locking latch



Typecode    **H6B-OM-1LS**  
 ID            **1 007 01 0000942**

### Technical Data

#### Product Properties

Series	Size 6B
Mating with	HE-006, HEE-010, HDD-024
Housing type	Panel mounting base
Cable outlets direction	Bottom open ends
Locking type	With single locking latch
Mounting type	Panel mounting
Protection Class	IP67
Impact strength	IK08
Temperature range	-40 °C ... 125 °C
Standard	DIN EN 175301-801

#### Insert

Housing material	Die-cast aluminum
Color	Gray (RAL 7037)
Locking latch material	Stainless steel
Seal	NBR, black

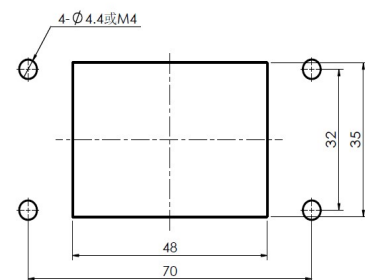
#### Commercial data

Weight	0.097 kg
Packaging unit	1 pc
Country of origin	CN

### Features

- Die casting of aluminum
- Stainless steel locking latch
- Impact resistant protective cover
- Bottom open ends
- Panel mounting base
- NBR, black
- Resistant to salt spray
- Approval: UL94-V0
- RoHS-compliant

### Mounting cutout



\*The design data are listed here, and the changes to the product are not described here. For unfinished matters, please contact customer service. It is the user's responsibility to verify functionality, compliance with applicable laws and instructions, and electrical safety in specific applications.