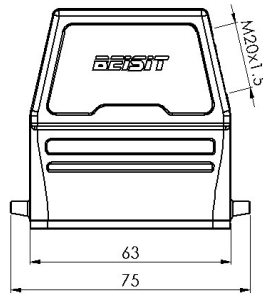
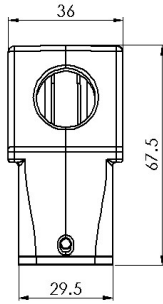


**Size 10A Sleeve housing, Lateral opening hole**

Typecode H10A-SO-2P-M20

ID 1 007 01 0000031

**Technical Data****Product Properties**

Series	Size 10A
Mating with	HA-010, HD-015
Housing type	Sleeve housing
Cable outlets direction	Lateral opening hole
Cable outlets	M20 x 1.5
Protection Class	IP65
Impact strength	IK08
Temperature range	-40 °C ... 125 °C
Standard	DIN EN 175301-801

**Insert**

Housing material	Die-cast aluminum
Color	Gray (RAL 7037)
Seal	NBR, black

**Commercial data**

Weight	0.134 kg
Packaging unit	1 pc
Country of origin	CN

**Features**

- Die casting of aluminum
- Lateral opening hole
- NBR, black
- Resistant to salt spray
- Approval: UL94-V0
- RoHS-compliant

\*这里所列的是设计数据，有关产品的变更不在此做说明，未尽事宜请联系客服。用户有责任验证功能、符合适用的法律和指令以及在特定应用中的电气安全。